

Zaawansowane metody wspomaganie decyzji przestrzennych

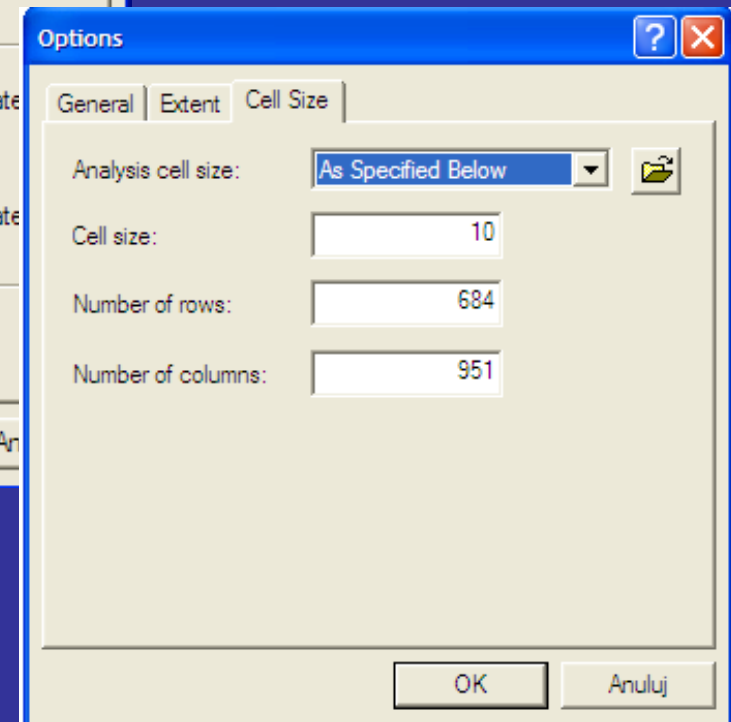
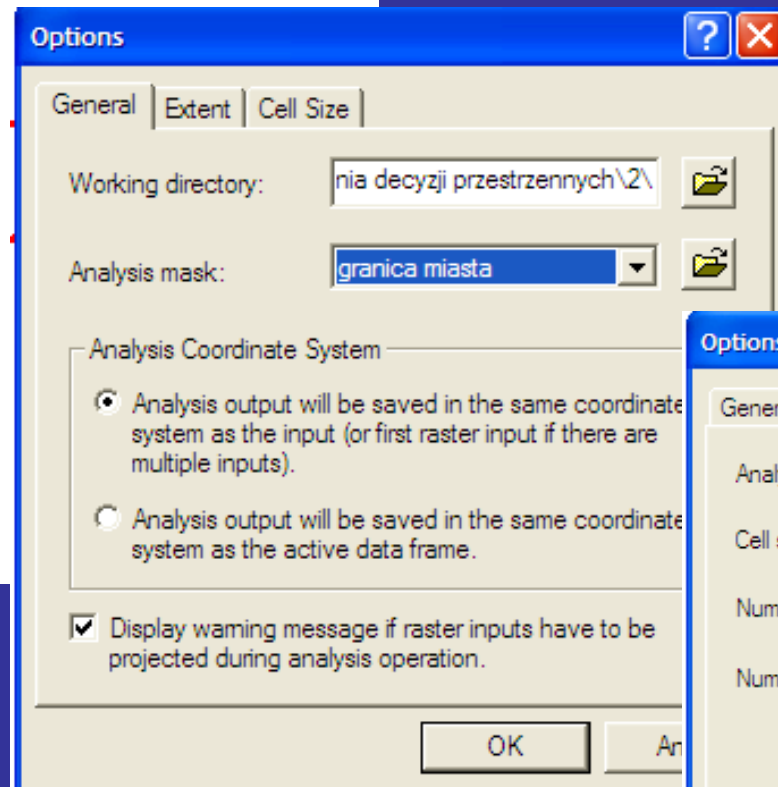
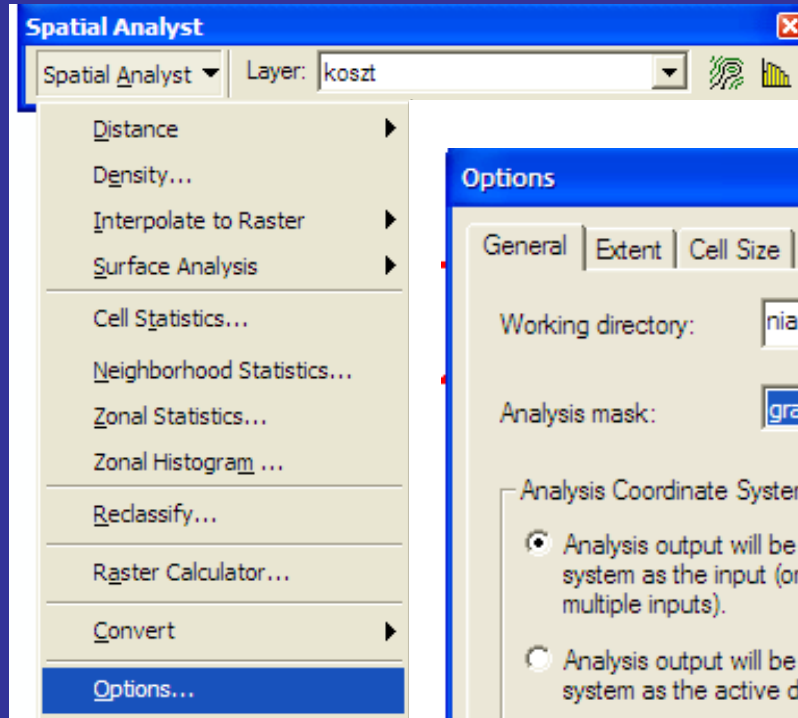
Wykorzystanie narzędzi ArcGIS: Spatial Analyst Network Analyst

Autor: Beata Krajewska

Prowadzący: dr inż. Wawrzyniec Zipser

Rok akademicki 2010/2011

Spatial Analyst



Spatial Analyst

Zamiana warstw na raster

Features to Raster

Input features: drogi

Field: SPEED

Output cell size: 10

Output raster: C:\Temp\zaawansowane met

OK Cancel

Features to Raster

Input features: ciek

Field: ID

Output cell size: 10

Output raster: C:\Temp\zaawansowane met

OK Cancel

Features to Raster

Input features: lasy

Field: ID

Output cell size: 10

Output raster: C:\Temp\zaawansowane met

OK Cancel

Features to Raster

Input features: ogródki działkowe

Field: ID

Output cell size: 10

Output raster: C:\Temp\zaawansowane met

OK Cancel

Spatial Analyst

Spatial Analyst

Layer: ciek2

Distance

Density...

Interpolate to Raster

Surface Analysis

Cell Statistics...

Neighborhood Statistics...

Zonal Statistics...

Zonal Histogram ...

Reclassify...

Raster Calculator...

Convert

Options...

Features to Raster

Input features: woda

Field: ID

Output cell size: 10

Output raster: C:\Temp\zaawansowane met

OK Cancel

Features to Raster

Input features: lasy

Field: ID

Output cell size: 10

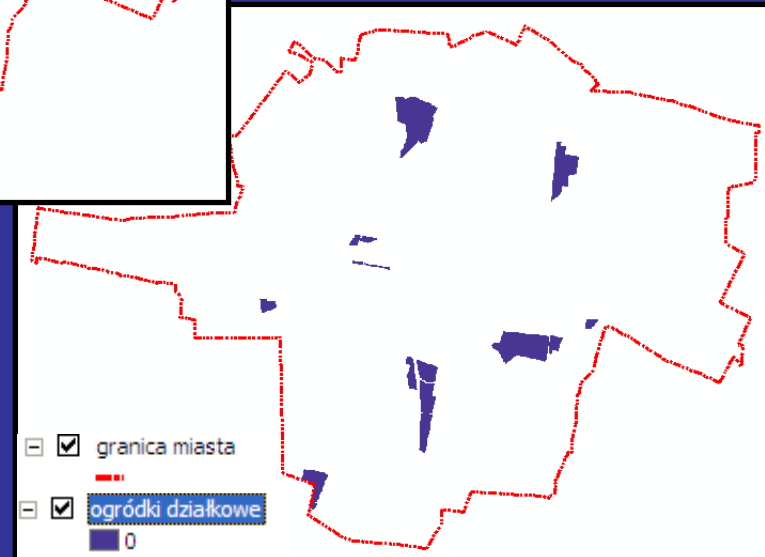
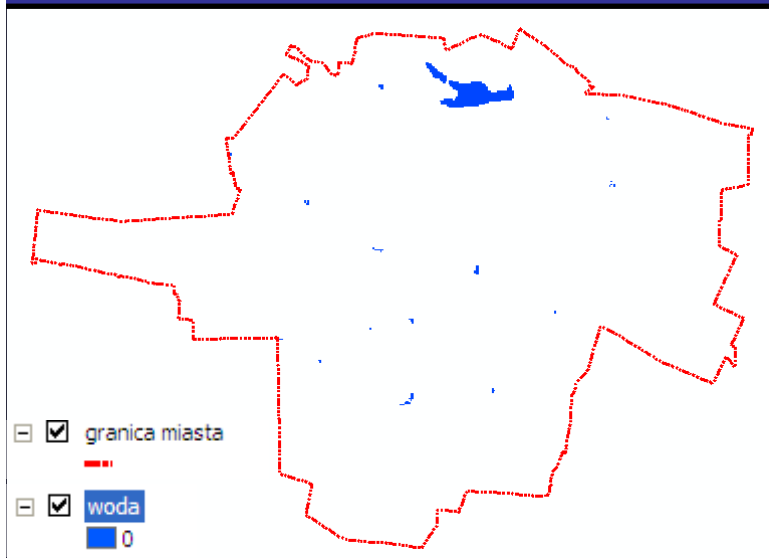
Output raster: C:\Temp\zaawansowane met

OK Cancel

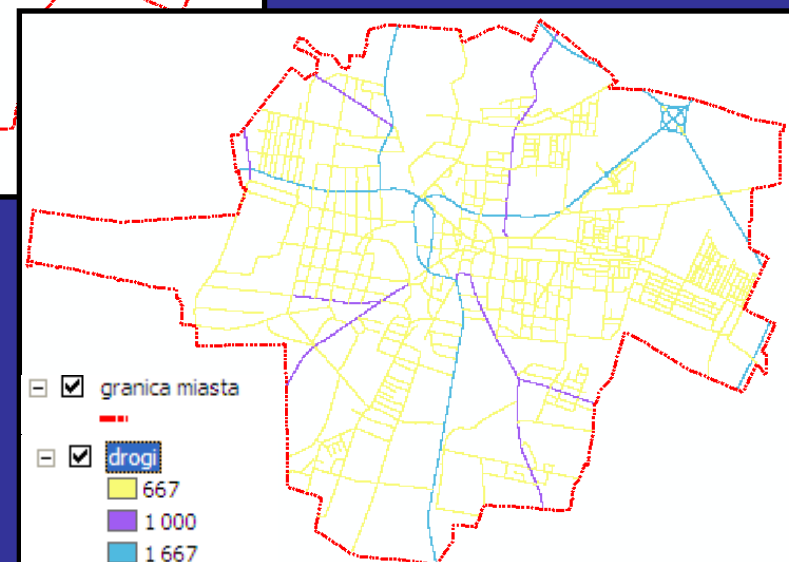
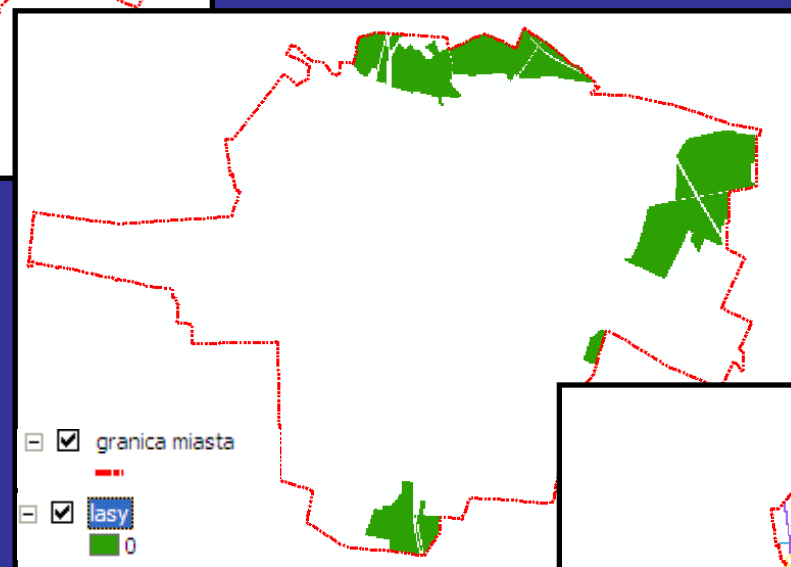
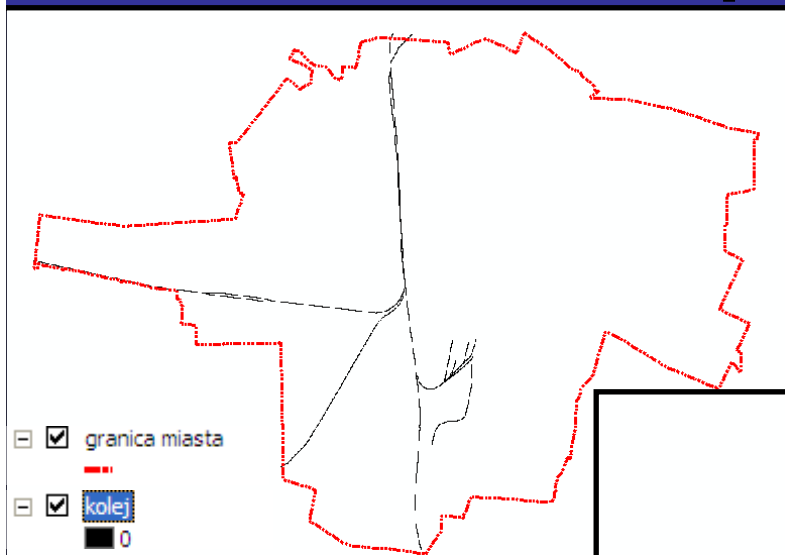
Features to Raster...

Raster to Features...

Spatial Analyst Rastry

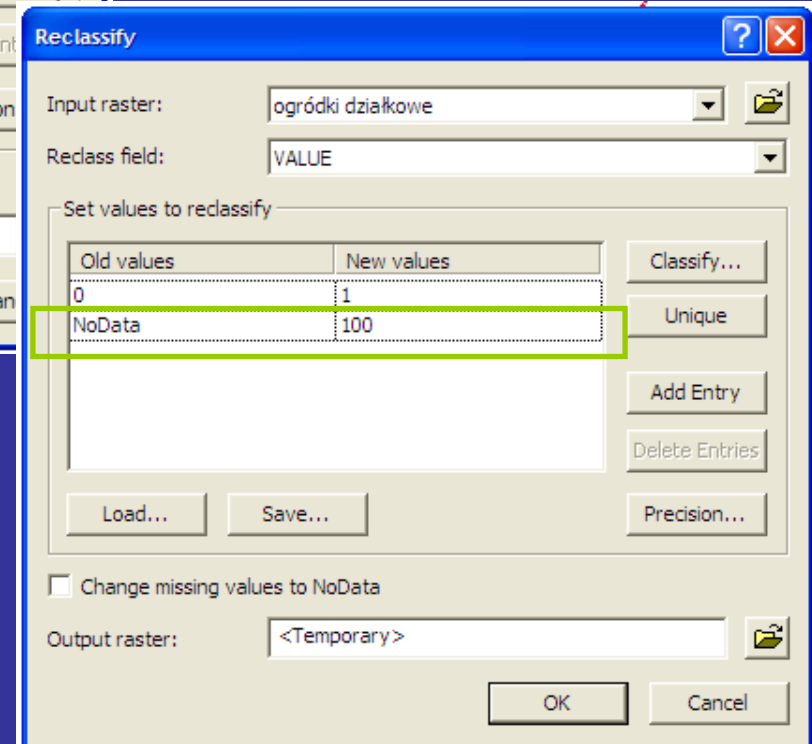
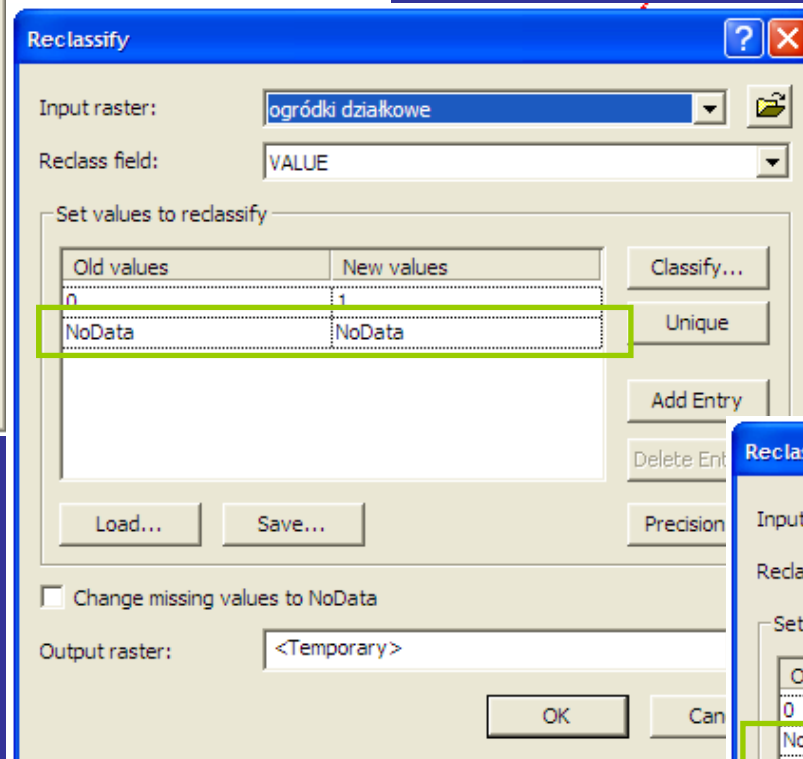
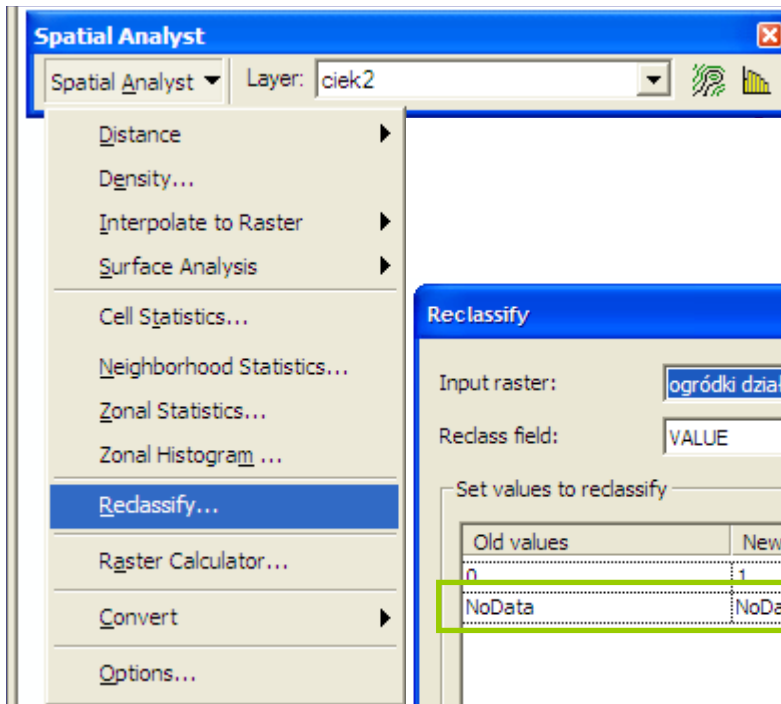


Spatial Analyst Rastry



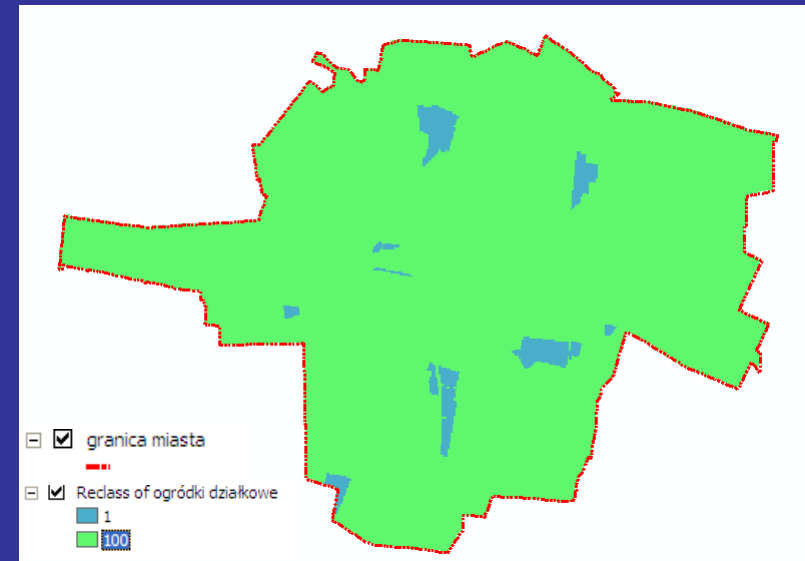
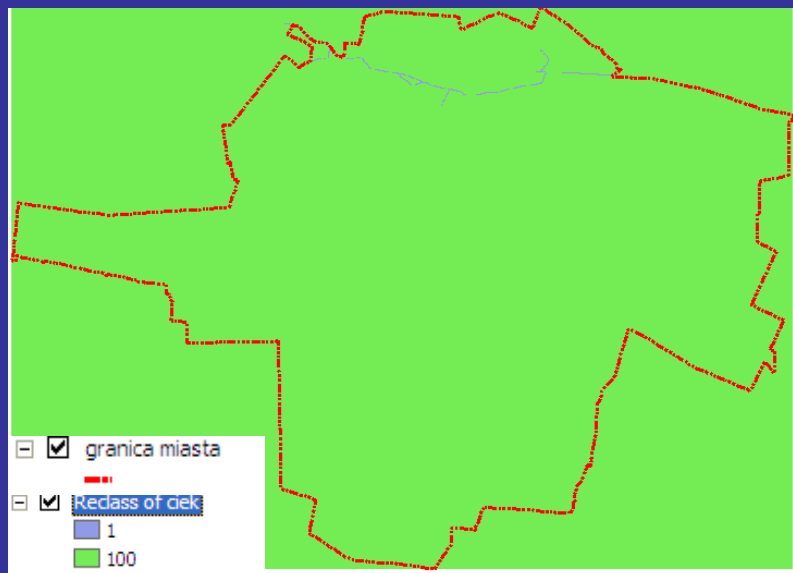
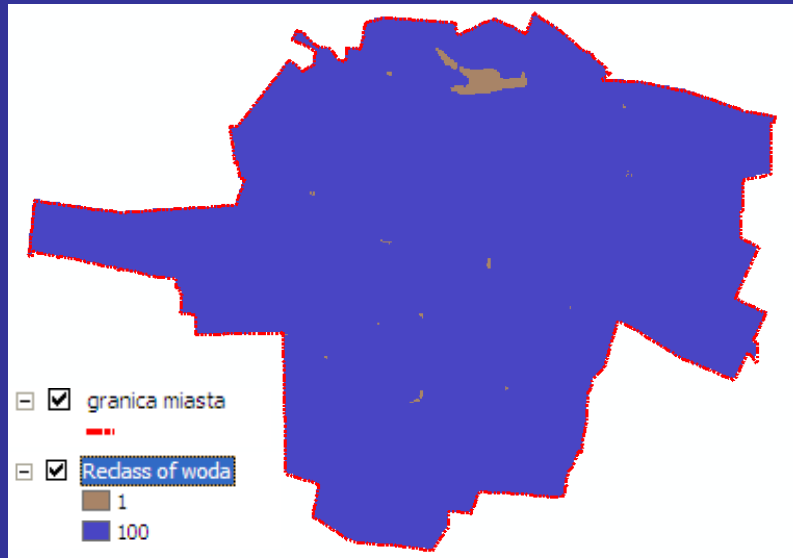
Spatial Analyst

Reklasyfikacja rastrów



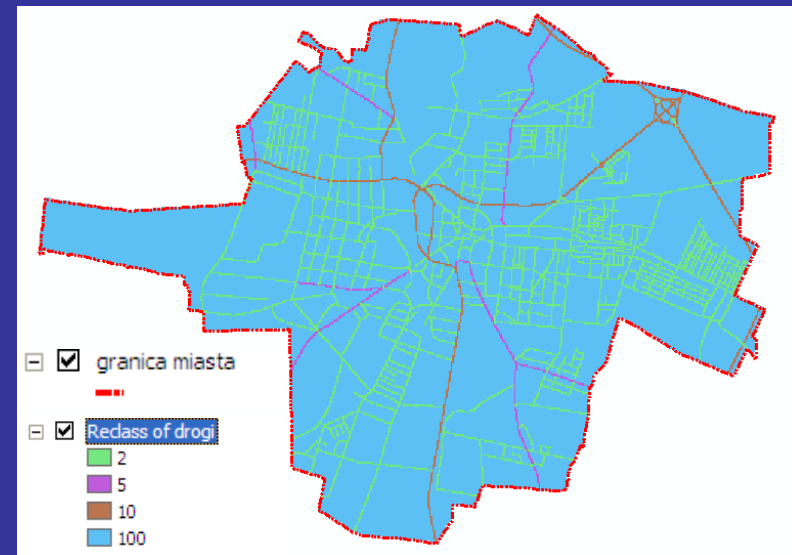
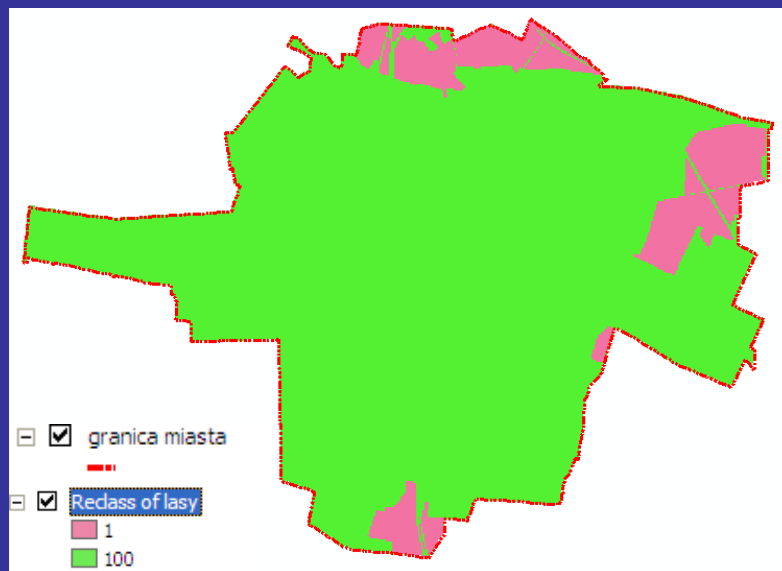
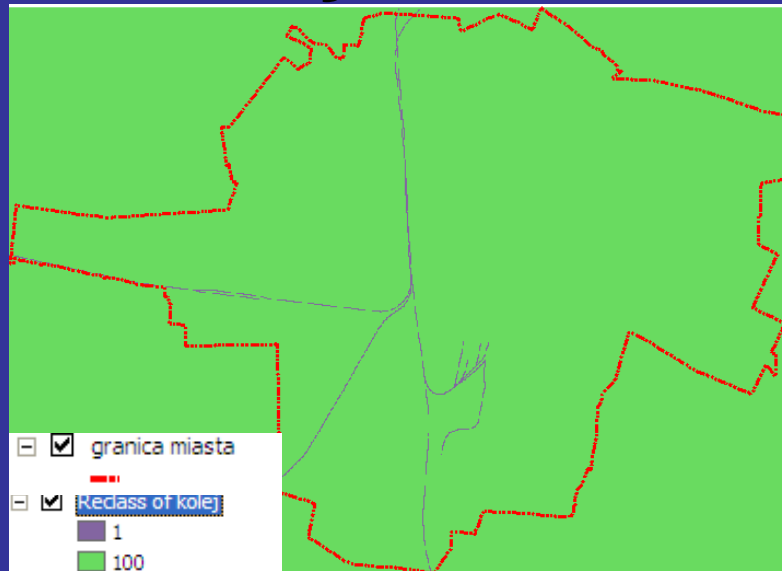
Spatial Analyst

Rastry z kosztem przemieszczania



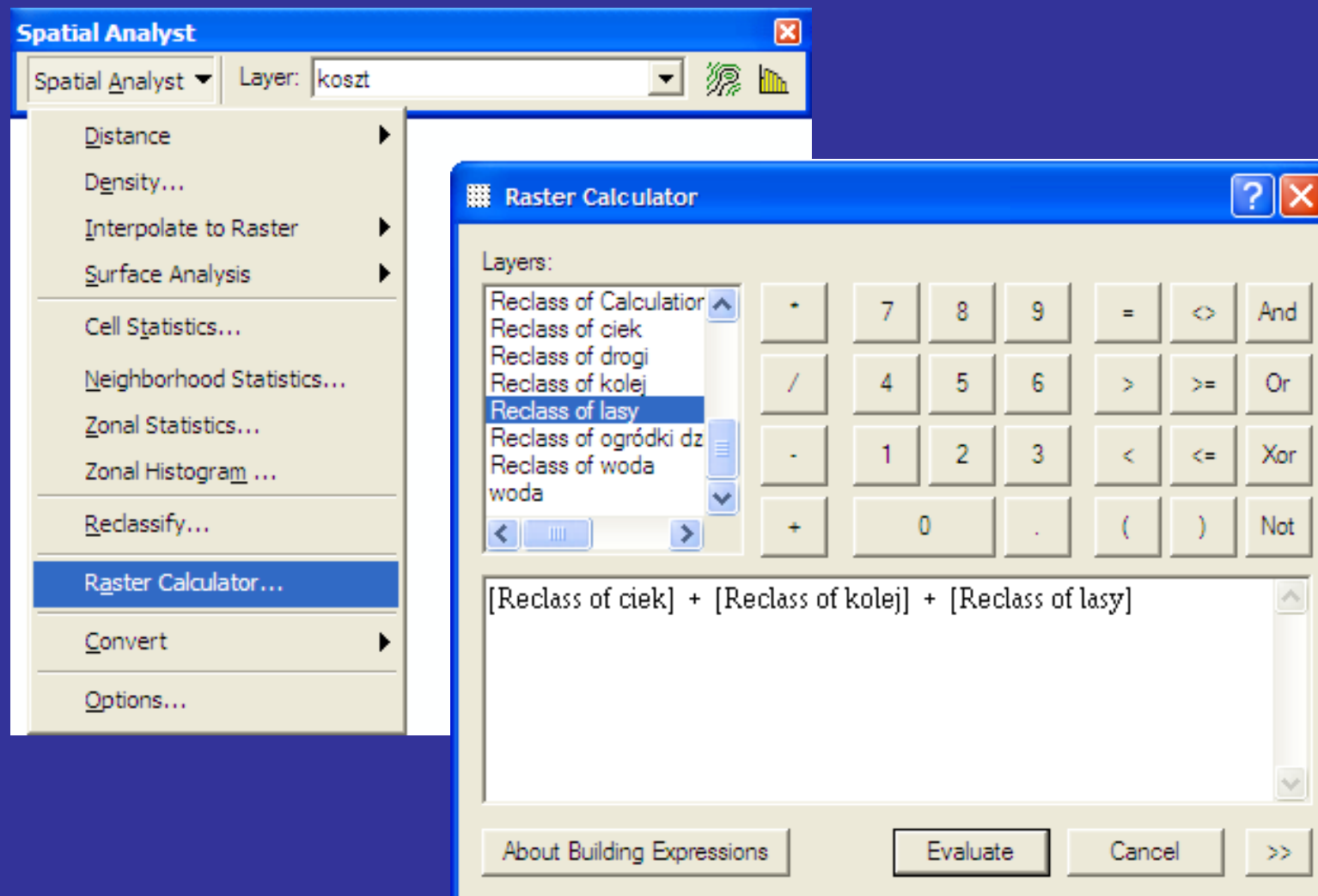
Spatial Analyst

Rastry z kosztem przemieszczania

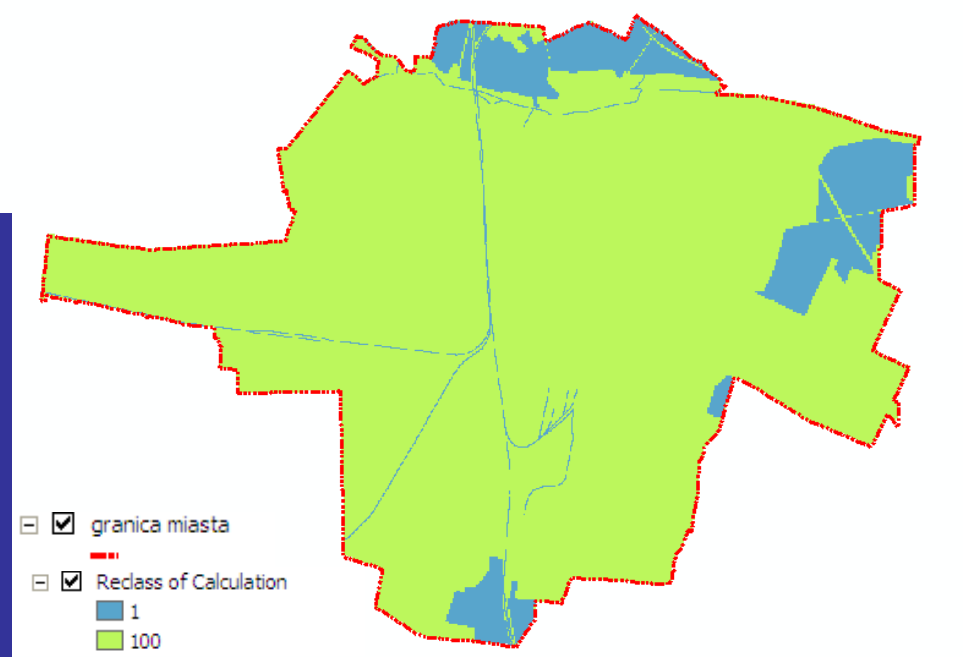
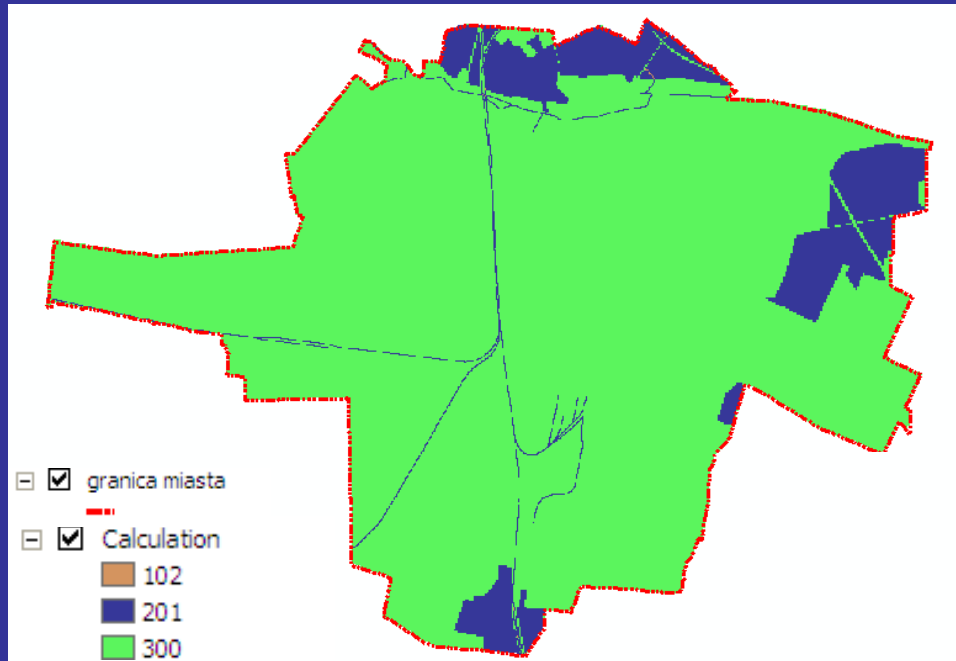


Spatial Analyst

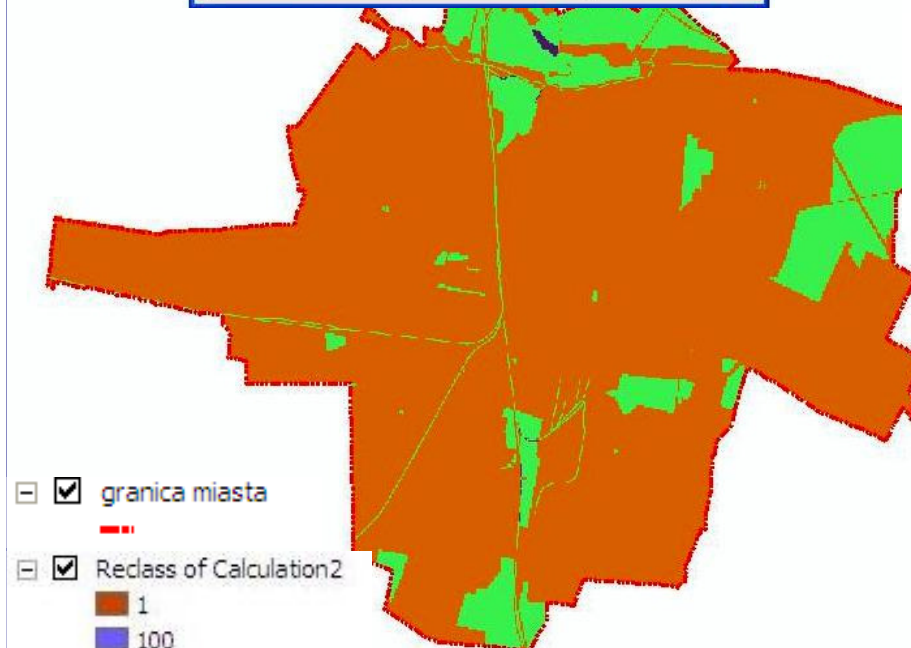
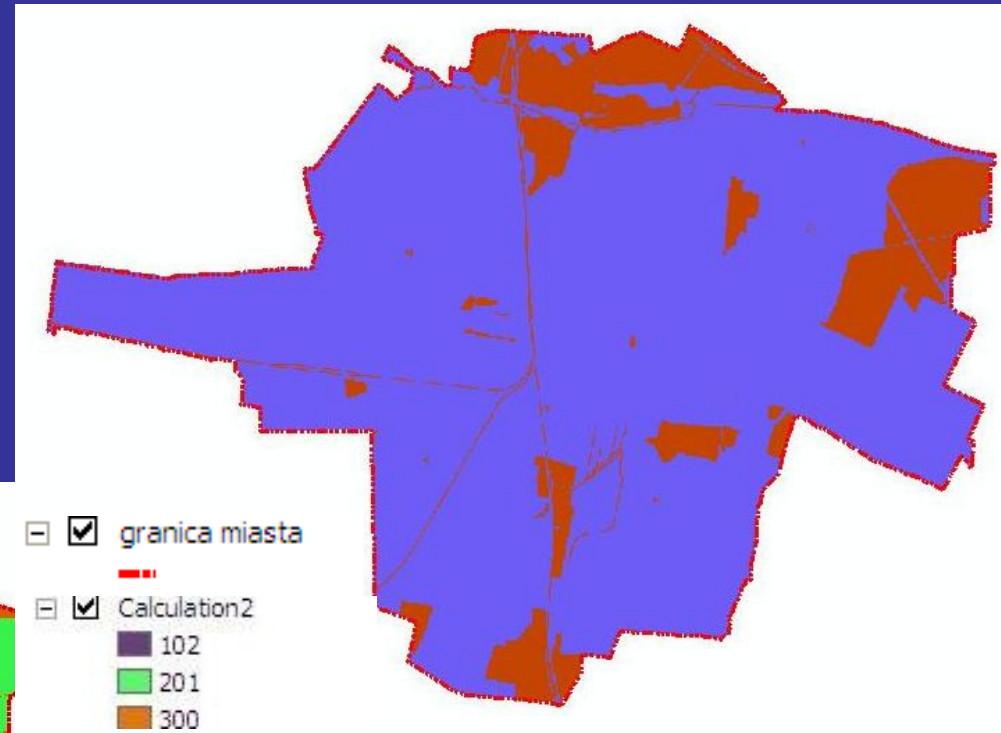
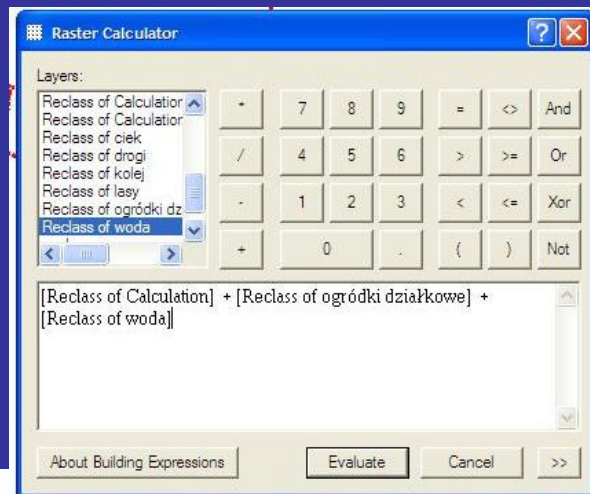
Łączenie rastrów – Raster Calculator



Spatial Analyst Raster Calculator i Reclassify

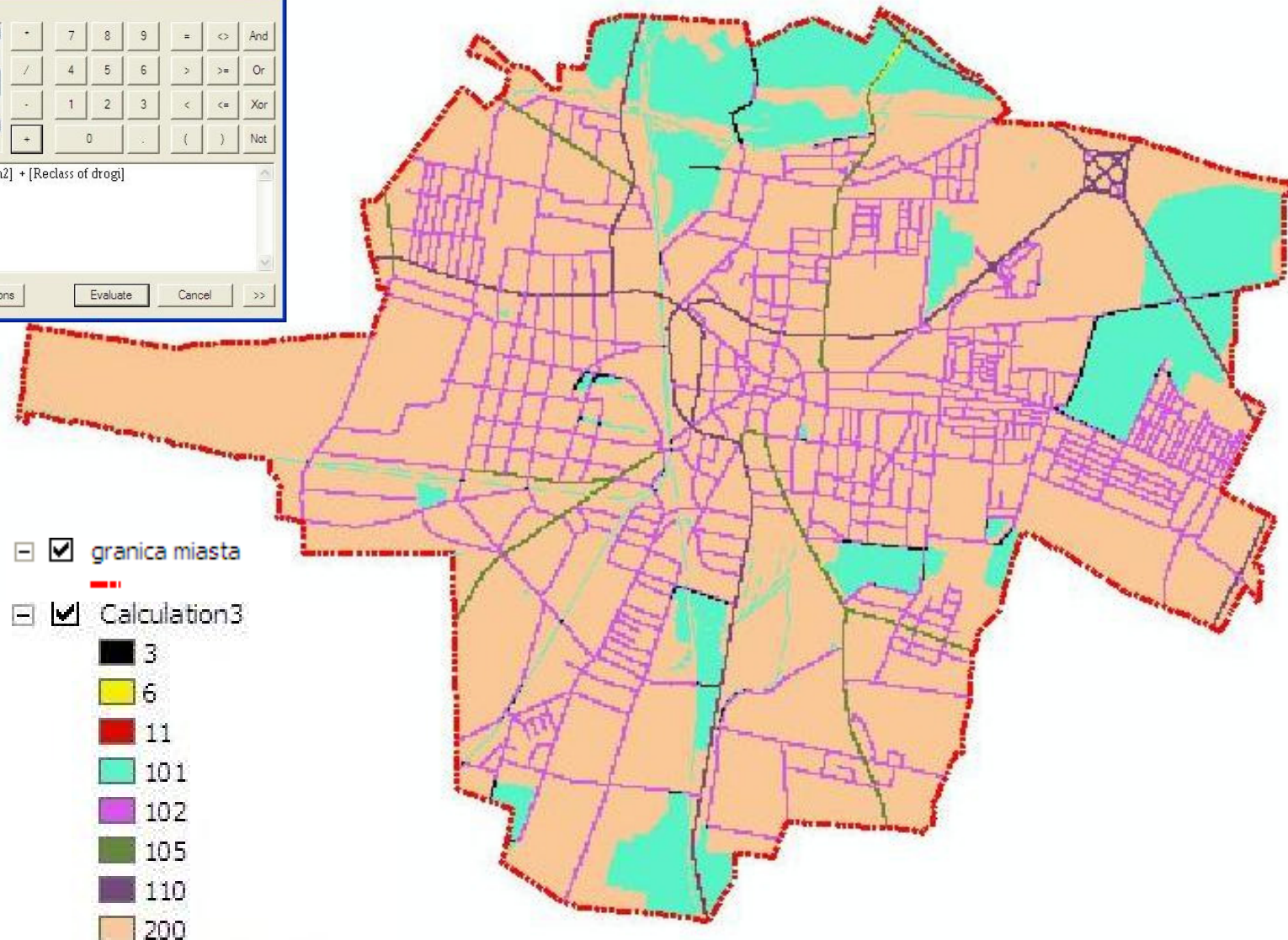
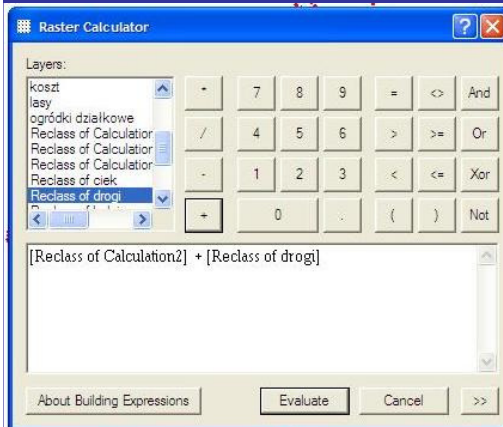


Spatial Analyst Raster Calculator i Reclassify



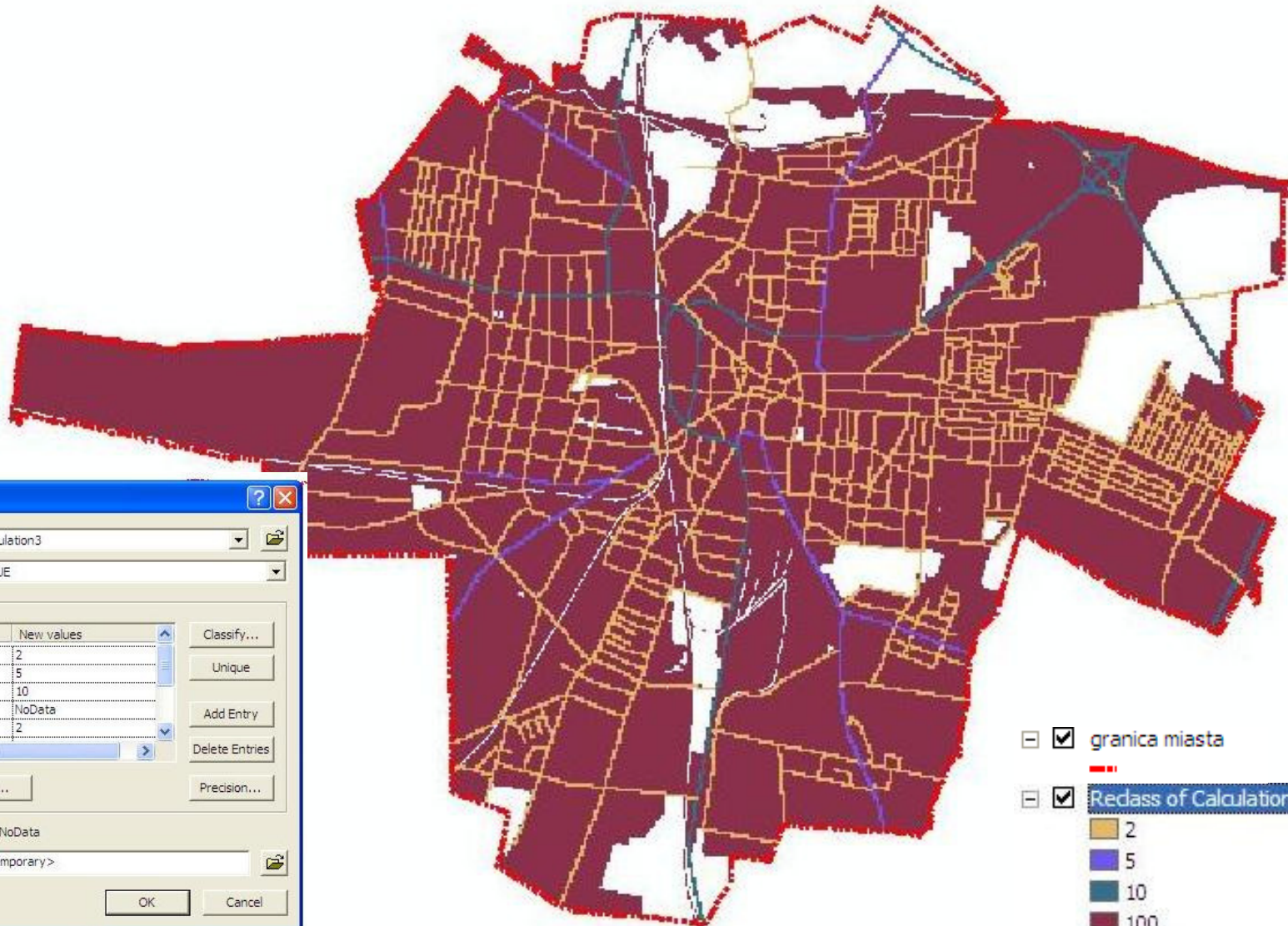
Spatial Analyst

Złożenie barier z ulicami - Raster Calculator



Spatial Analyst

Złożenie barier z ulicami - Reclassify



Reclassify

Input raster: Calculation3

Reclass field: VALUE

Set values to reclassify

| Old values | New values |
|------------|------------|
| 3 | 2 |
| 6 | 5 |
| 11 | 10 |
| 101 | NoData |
| 102 | 2 |

Buttons: Classify..., Unique, Add Entry, Delete Entries, Load..., Save..., Precision...

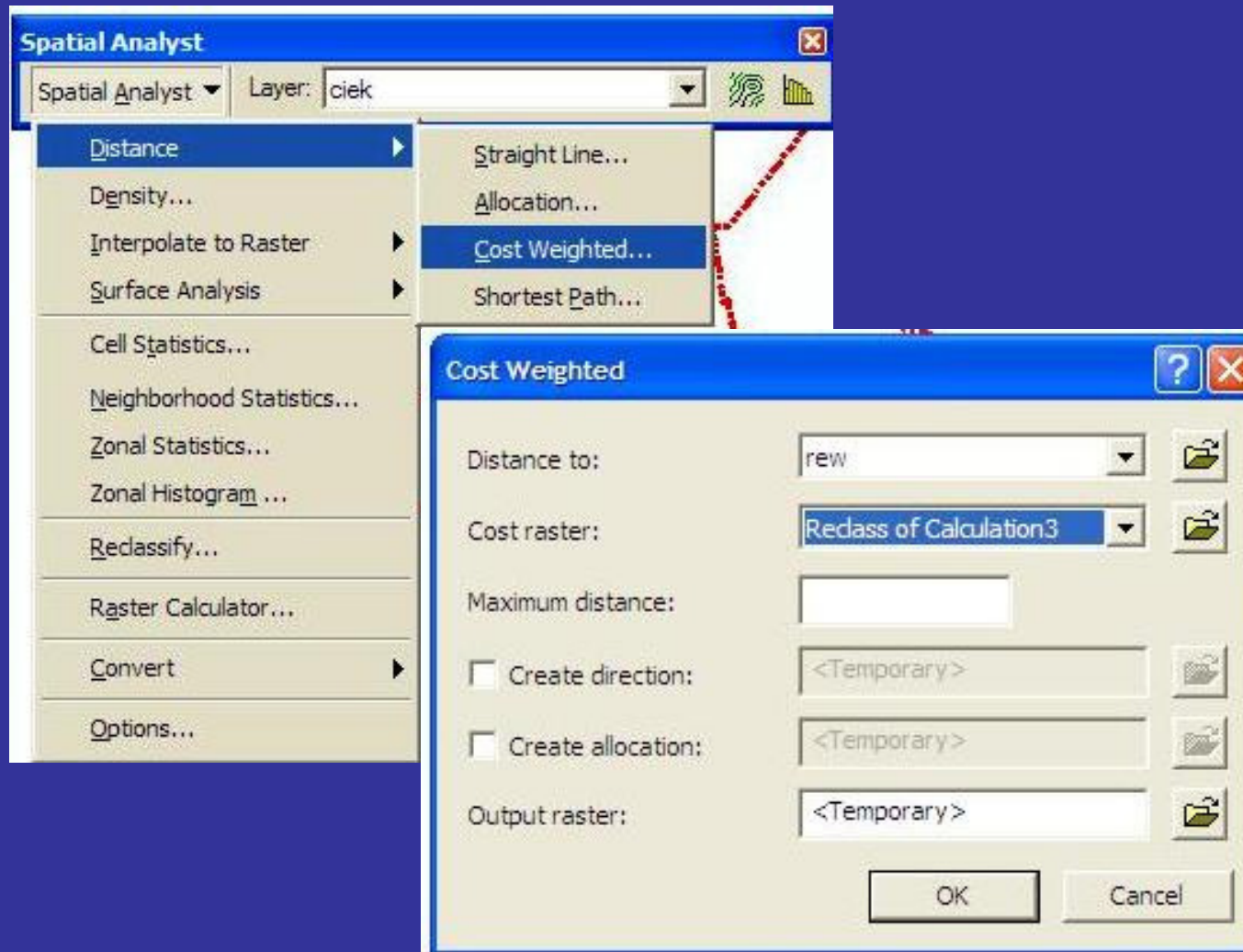
Change missing values to NoData

Output raster: <Temporary>

Buttons: OK, Cancel

Spatial Analyst

Distance → Cost Weighted



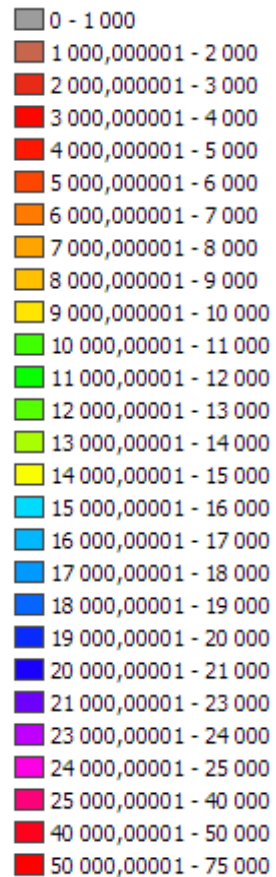
Spatial Analyst

Dostęp do obszaru rewitalizacji

granica miasta

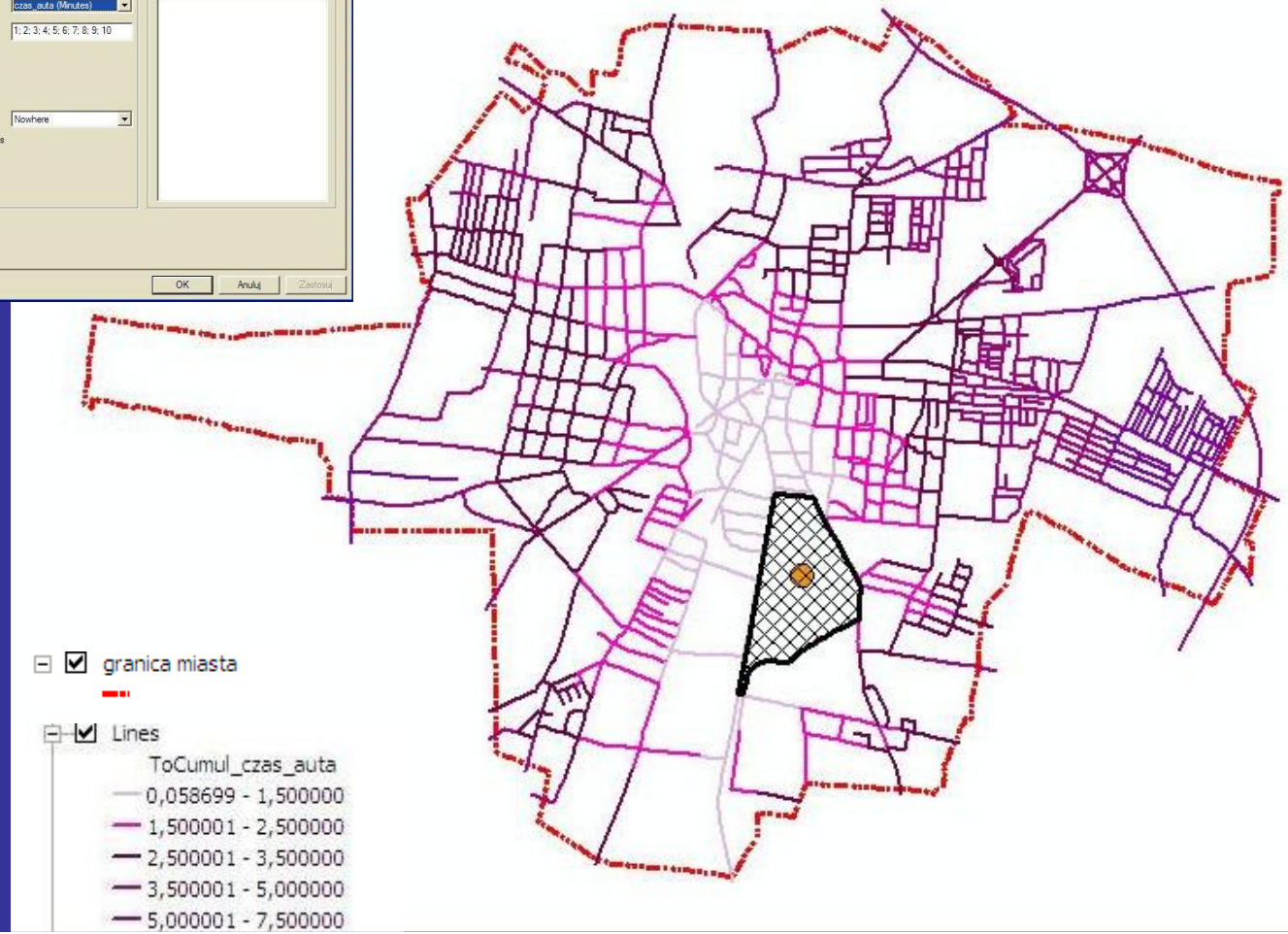
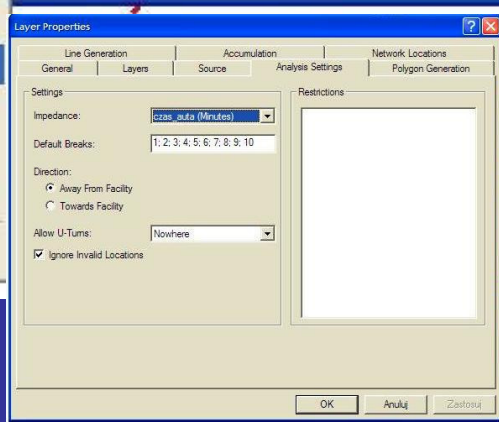
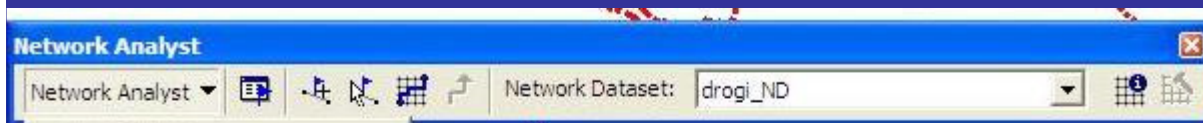
koszt

<VALUE>



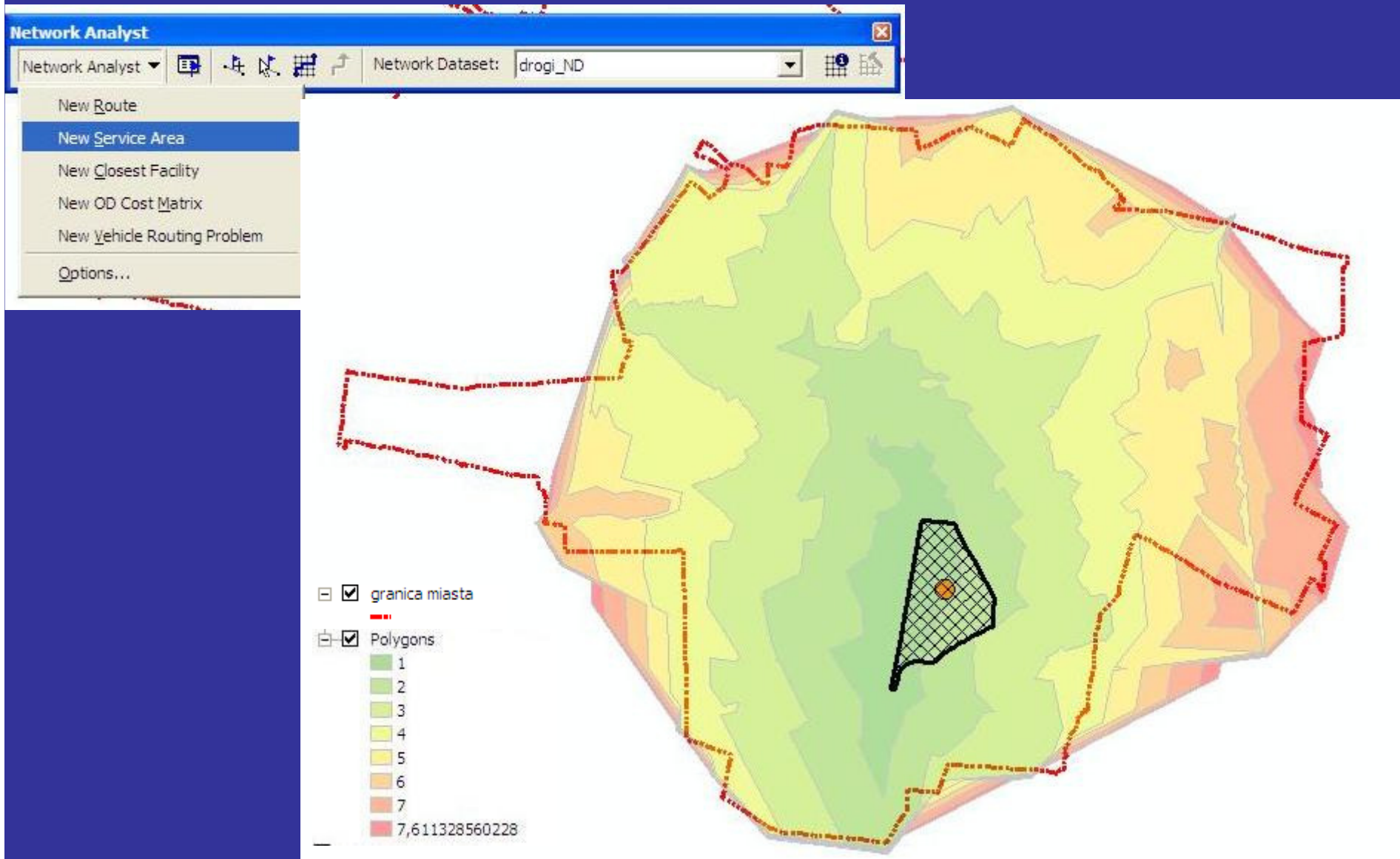
Network Analyst

Wizualizacja na sieci drogowej

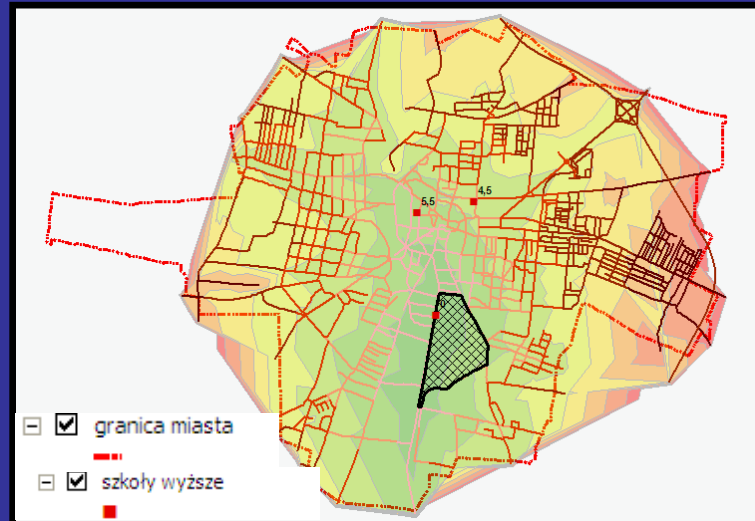
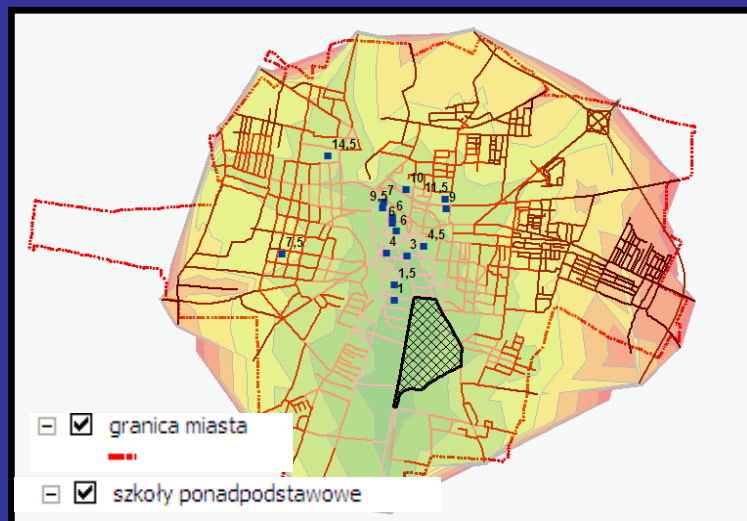
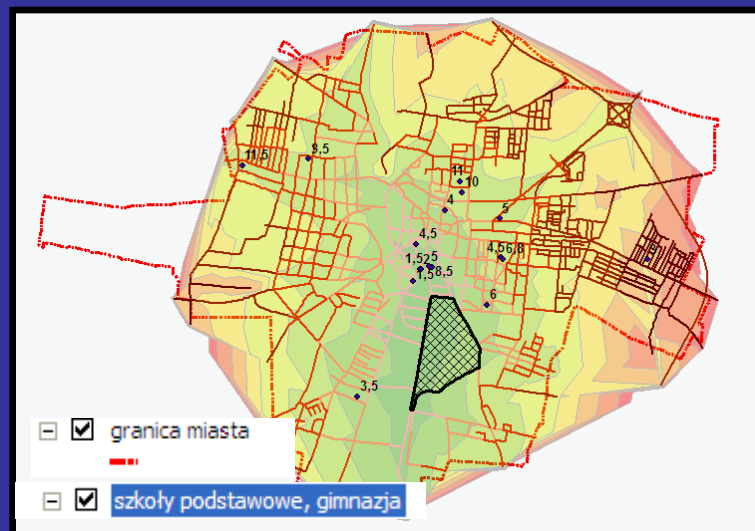
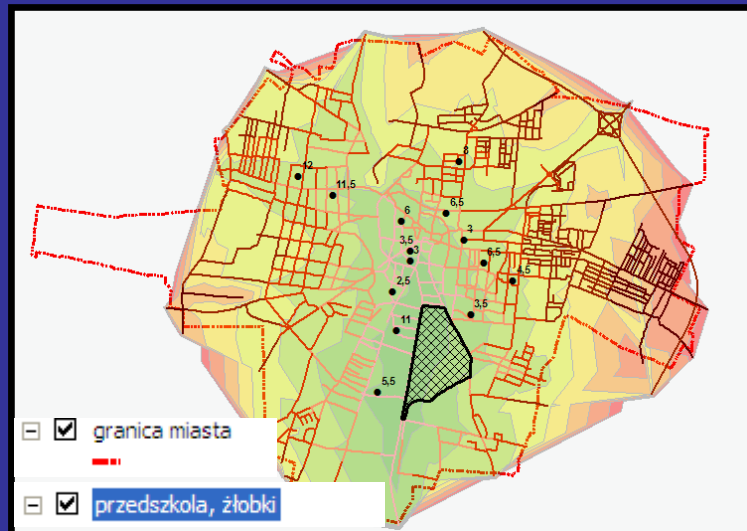


Network Analyst

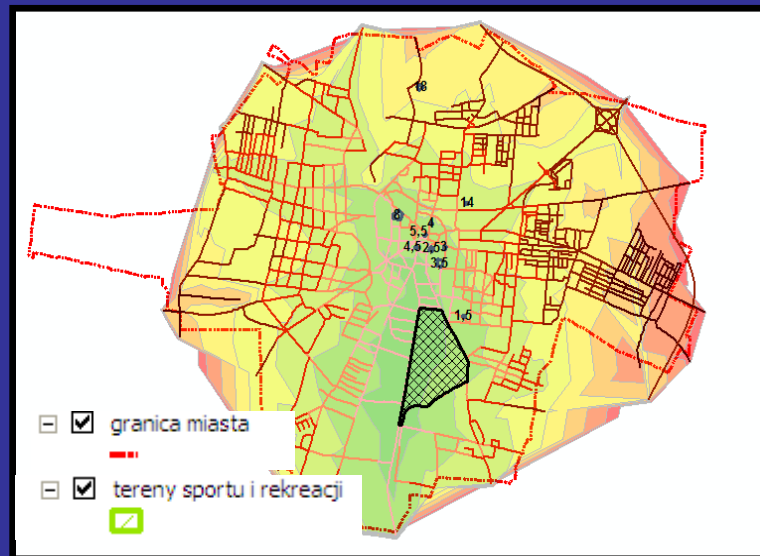
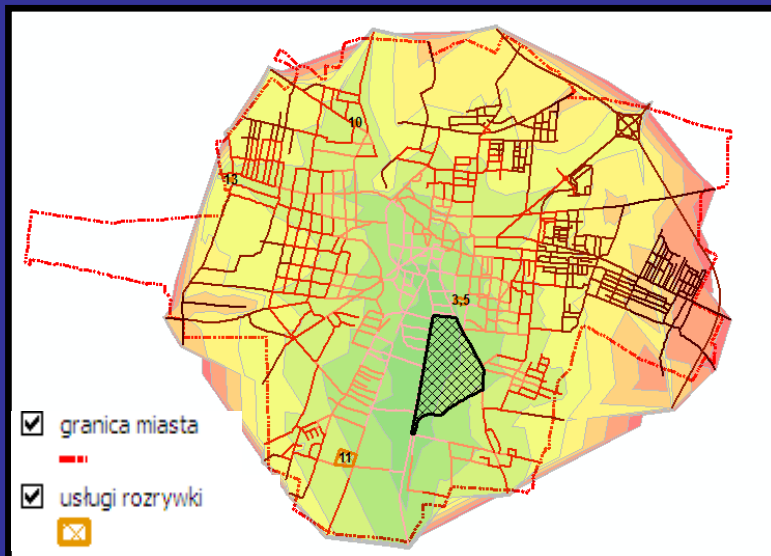
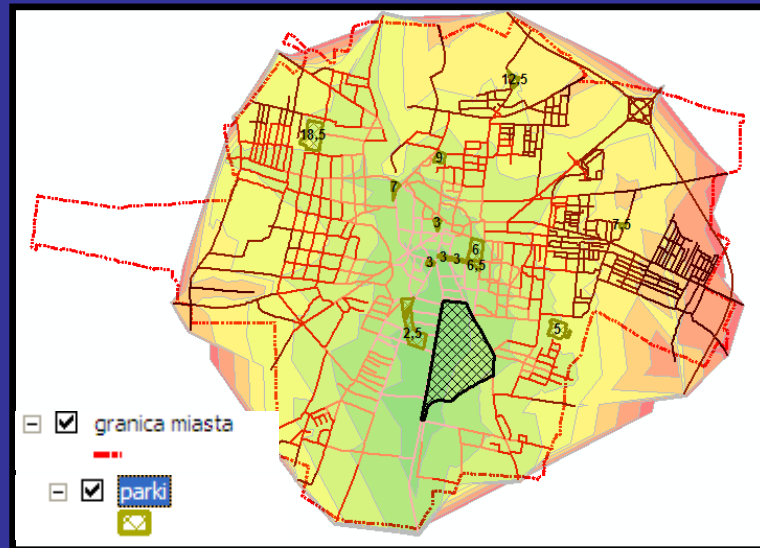
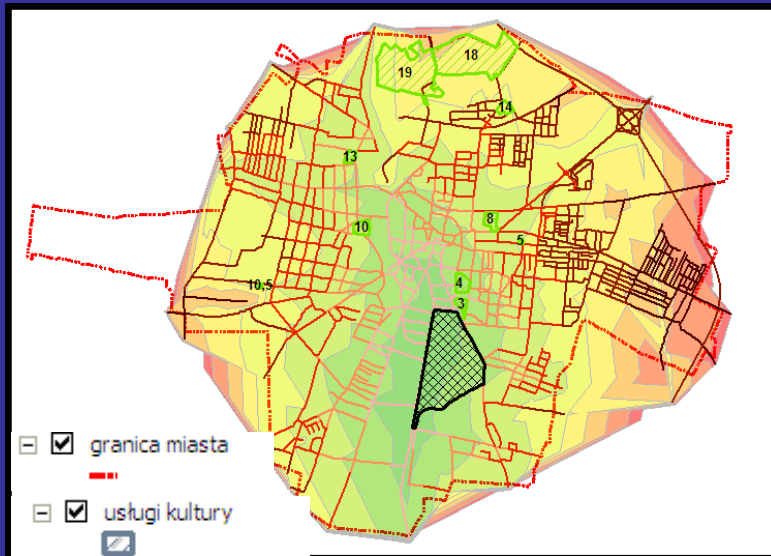
Wizualizacja na poligonach



Dostęp do jednostek edukacji z obszaru rewitalizacji



Dostęp do usług kultury, rozrywki, parków, terenów sportu i rekreacji z obszaru rewitalizacji



Spatial Analyst

Mapy gęstości punktów reprezentujących jednostki edukacji

